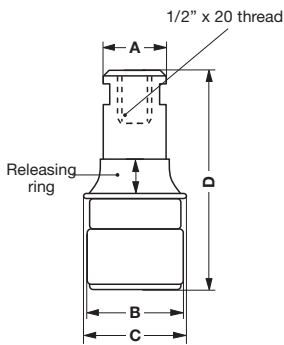


**Quick change SDS converter
for regular percussion power tools**

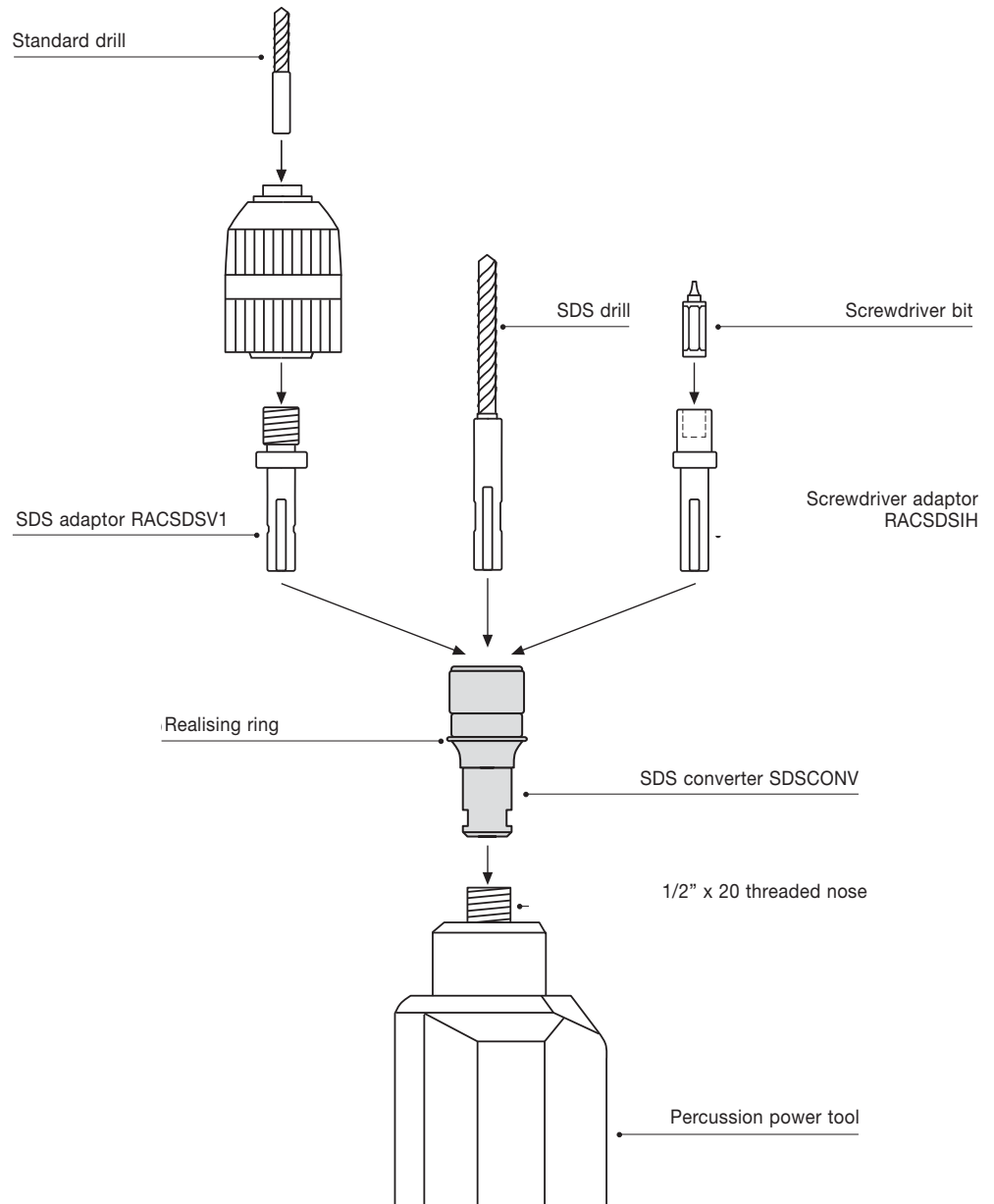


This converter adapts regular percussion impact machines to receive SDS shank tools. Quick change of SDS shank tools through the axial sliding releasing ring. Robust all steel production.

Model No.	Power tool nose	A mm	B mm	C mm	D mm	Packaging style	Weight g
SDSCONV	1/2" x 20	22	28	30	58	Individual box	160
SDSCONVB						Blister card	



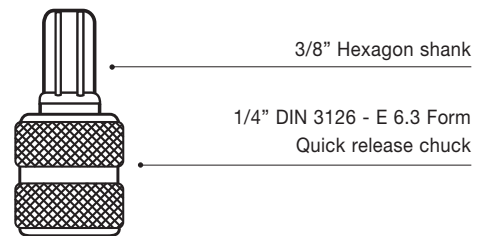
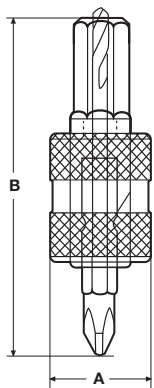
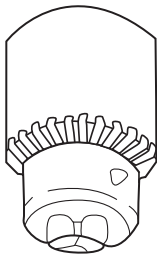
DIFFERENT WAYS OF APPLICATION



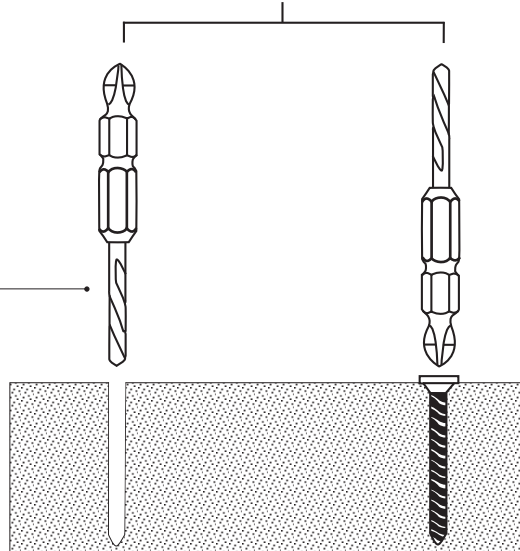


Tool set includes 1/4" quick release chuck with 3/8" hexagon shank to be fitted in a power tool and three unique hole drill and drive bit combinations which enable easy and fast way to change tool for drilling hole and screwing.

Model No.	A mm	B mm	Packaging style	Weight g
DSTS	20.5	54	Blister card	90



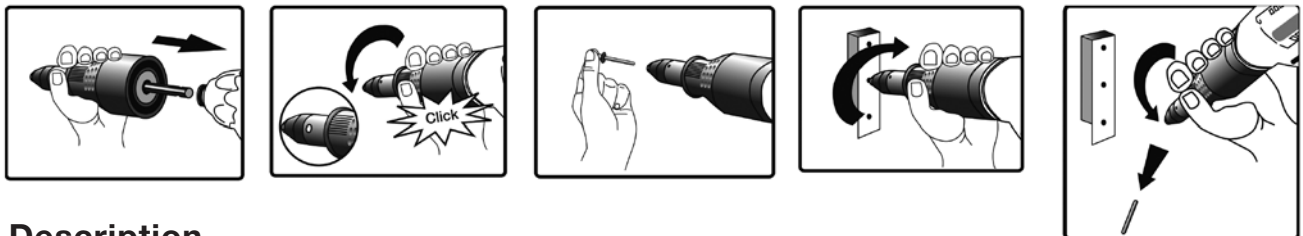
Drill bit size:
2.5 mm
3.0 mm
4.0 mm



new



- ① Hexagon shank 1/4" Din 3126 Form E 6.3
- ② Housing: plastic material
- ③ Nosepiece: mm 2.4 – 3.2 – 4.0 – 4.8
- ④ Sight window: Blind rivet loading
- ⑤ Wrench with interchangeable noses



Description

Simply convert the standard cordless, electric, pneumatic drill / driver into a blind rivet gun.

- Accept 3/8" and 1/2" (10/13 mm) drill chuck or 1/4"(6.35mm) hex recess.
- Compatible with 12V,14.4V and 18V cordless drill / driver and any reversible corded drill I driver.
- Pull: Aluminum rivets: 2.4 - 4.8 mm
Stainless steel rivets: 2.4 - 4.0 mm
- Comes complete 2.4 – 3.2 – 4.0 – 4.8 mm (3/32" - 1/8"- 5/32" - 3/16") 4 nosepieces.
- Max rpm: 1000 rpm.
- The shank of rivet is expelled when the drill is operated in the "reverse" mode.
- If used with a combine impact drill, ensure that it is set to drilling mode.

Model No.	Mount	Aluminum rivets size mm	Steel rivets size mm	Maximum speed	Packaging style	Weight g
RIVCONV	1/4" DIN 3126 Form E 6.3	from 2.4 up to 4.8	from 2.4 up to 4.0	1000 rpm	Individual box	280



RACSDSV1

RACSDSIH

Model No.	Style	Description	Packaging style	Weight g
RACSDSV1	BOSCH SDS+	To convert SDS and other direct drive systems to accept 1/2" x 20 female chuck for rotary only work Supplied complete with M6 left hand threaded retaining screw	Individual box	55
RACSDSV1B			Blister card	55
RACSDSMAKB	MAKITA		Blister card	50
RACSDSIH magnetic	BOSCH	To convert SDS system to accept tools with 1/4" hexagon shanks for rotary rotation work	Bulk	50
RACSDSIHB magnetic	SDS+		Blister card	

Model No.	Description	Packaging style	Weight g
VSR10D5	M5 left hand thread spare screw total length 18 mm for use with 10 mm 3/8" x 24 threaded keyed chucks	Bulk	6
VSR10D6	M6 left hand thread spare screw total length 23 mm for use with 10 mm 1/2" x 20 threaded keyed chucks		
VSR13D6	M6 left hand thread spare screw total length 27 mm for use with SDS adaptors and 13 mm 1/2" x 20 threaded keyed chucks		



Model No.	Description	Packaging style	Weight g
RAC3812M	To convert 1/2" x 20 female to 3/8" x 24 male	Individual box	26
RAC3812MB		Blister card	
RAC3838M	To convert 3/8" x 24 female to 3/8" x 24 male	Individual box	19
RAC3838MB		Blister card	



Model No.	Description	Packaging style	Weight g
RAC3812F	To convert 1/2" x 20 female to 3/8" x 24 female	Individual box	11
RAC3812FB		Blister card	





new

Model No.	Description
RACX1SQ38B	1/4" hexagon adaptor to 3/8" square drive



new

Model No.	Description
RACX1WBHB	1/4" wobble type adaptor <ul style="list-style-type: none"> • locked: straight position • unlocked: wobble position up to 25°



new

Model No.	Description
RAC12SQ38B	Convert 1/2" x 20 thread to 3/8" square drive
RAC12SQ12B	Convert 1/2" x 20 thread to 1/2" square drive

new

Quick release 1/4" hexagon bit holders



Model No.	Description
RAC14HSQ14B	To be fitted on 1/4" square drive machine
RAC14HSQ38B	To be fitted on 3/8" square drive machine
RAC14HSQ12B	To be fitted on 1/2" square drive machine
RAC14HT38B	To be fitted on 3/8" x 24 threaded mount machine
RAC14HT12B	To be fitted on 1/2" x 20 threaded mount machine