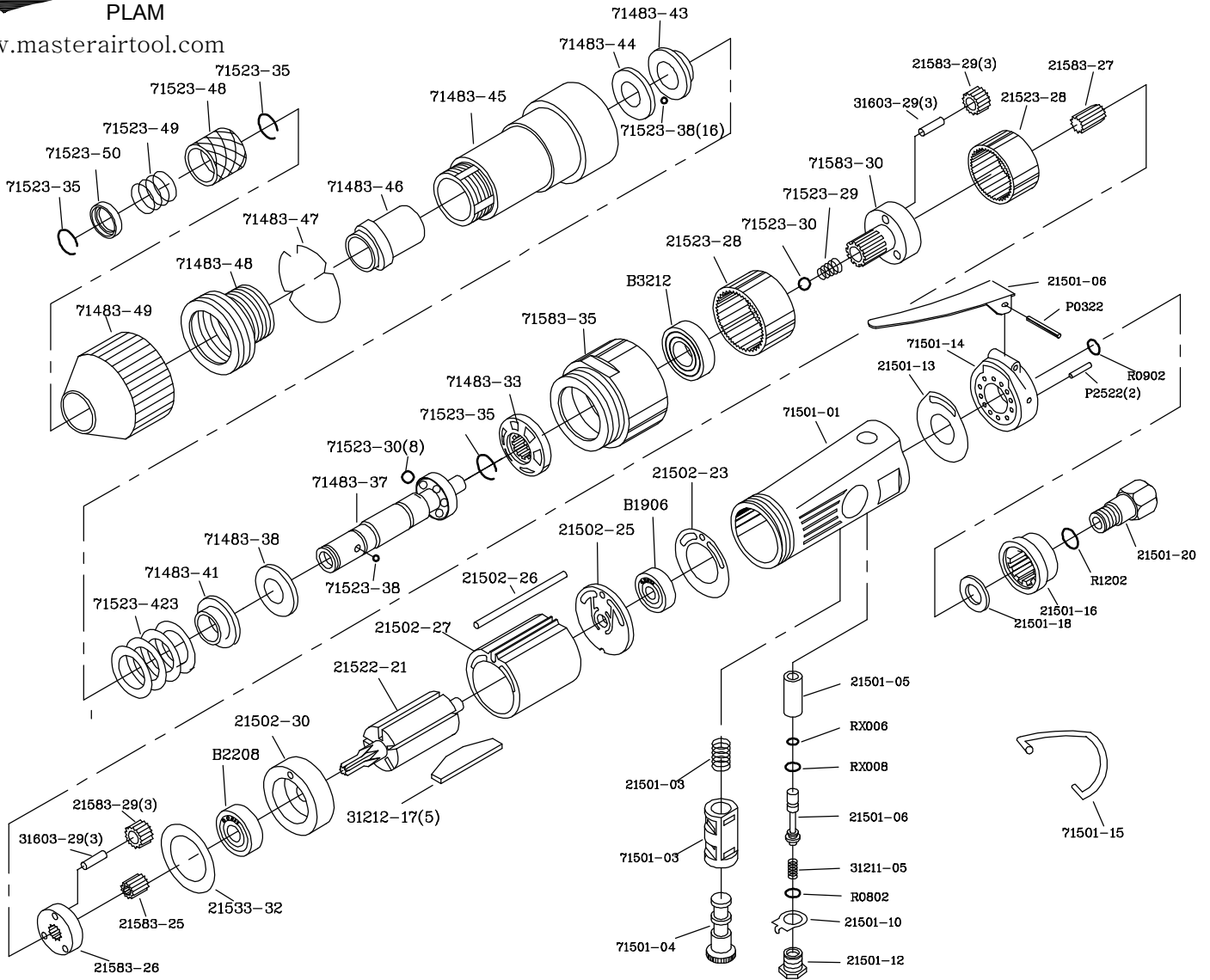


MPT-71470 1/4"(750rpm) External Adjustable Clutch Straight Screwdriver



DESCRIPTION	PARTS NO.	DESCRIPTION	PARTS NO.	DESCRIPTION	PARTS NO.
MOTOR HOUSING	71501-01	SPRING PIN	P0322	CLAMP NUT	71583-35
O RING	RX008	MOTOR GASKET	21502-23	DRIVE DOG	71483-33
THROTTLE VALVE	21501-06	BEARING	B1906	RETAINING RING (3)	71523-35
O RING	RX006	REAR END PLATE	21502-25	CAM SPINDLE	71483-37
REVERSE SPRING	21501-03	MOTOR PIN	21502-26	CAM WASHER	71483-38
REVERSE BUSHING	71501-03	CYNLIDER	21502-27	STEEL BALL (17)	71523-38
VAVLE BUSHING	21501-05	ROTOR	21522-21	HOUSING HOOK	71501-15
REVERSE VALVE	71501-04	ROTOR BLADE(5)	31212-17	WASHER	71483-41
VALVE SPRING	31211-05	FRONT END PLATE	21502-30	SPRING (GREEN)	71523-423
THROTTLE LEVER	21501-21	BEARING	B2208	WASHER	71483-43
VAVLE SCREW	21501-12	MOTOR WASHER	21533-32	BALL GUIDE	71483-44
EXHAUST SLEEVE	21501-16	CONNECT GEAR	21583-25	CLUTCH HOUSING	71483-45
O RING	R0902	CONNECT GEAR PLANET	21583-26	BUSHING	71483-46
O RING	R0802	TRANSMISSION GEAR	21583-27	RETAINER	71483-47
REVERSE RETAINER	21501-10	PLANET GEAR (6)	21583-29	ADJUSTABLE SCREW	71483-48
HOUSING GASKET	21501-13	PLANET GEAR SPINDLE (6)	31603-29	ADJUSTABLE KNOB	71483-49
HOUSING CAP	71501-14	SPINDLE SPRING	71523-29	BIT WASHER	71523-50
SPRING PIN(2)	P2522	SPINDLE BALL (9)	71523-30	BALL RETAINER	71523-48
O RING	R1202	PLANET GEAR SEAT	71583-30	SPRING	71523-49
HOUSING CAP WASHER	21501-18	INTERNAL GEAR (2)	21523-28	1/4" #2 BIT (2)	71523-53
INLET BUSHING	21501-20	BEARING	B3212		