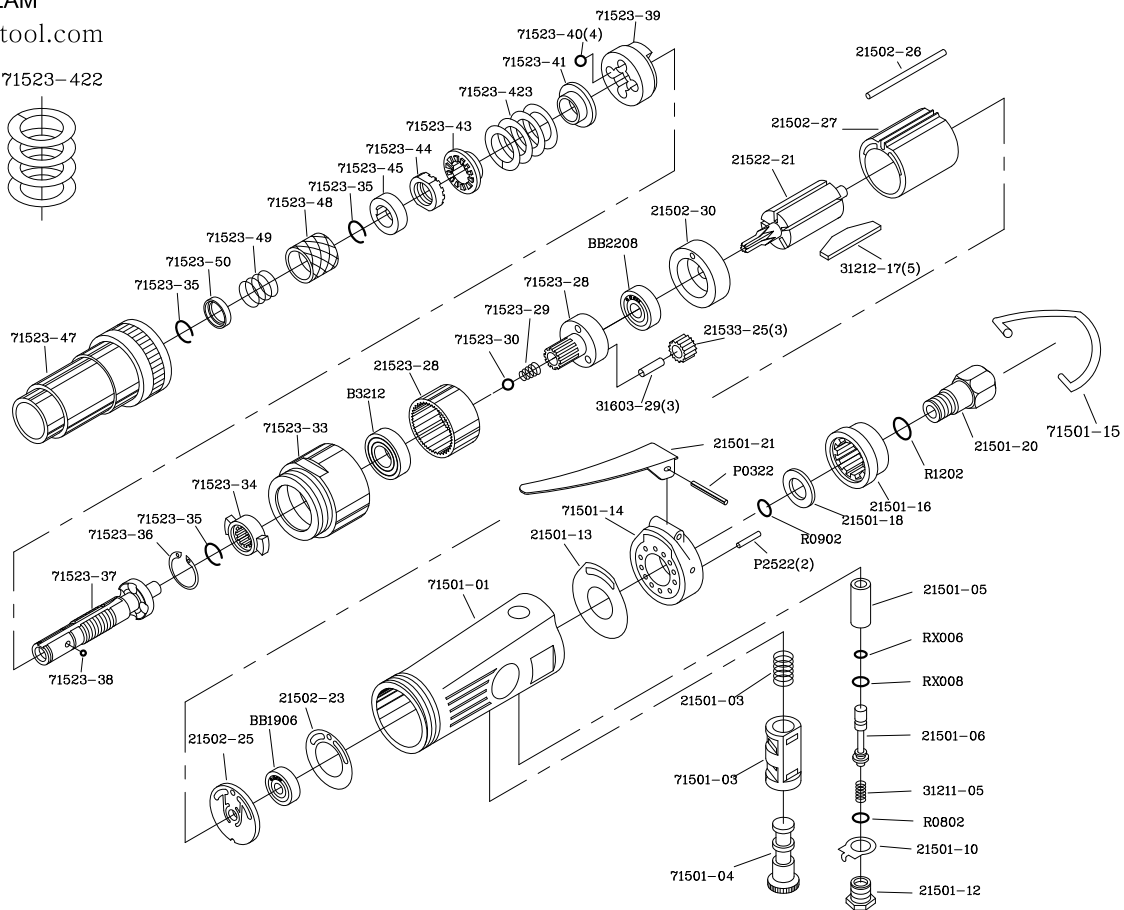
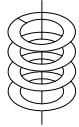
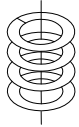


MPT 71500 1/4"(1800R.P.M) Adjustable Clutch Screwdriver

www.masterairtool.com

71523-421 71523-422



DESCRIPTION	PARTS NO.	DESCRIPTION	PARTS NO.
MOTOR HOUSING	71501-01	BEARING	BB2208
REVERSE SPRING	21501-03	PLANET GEAR(3)	21533-25
REVERSE BUSHING	71501-03	PLANET PIN(3)	31603-29
REVERSE VALVE	71501-04	PLANET CAGE	71523-28
VALVE BUSHING	21501-05	SPRING	71523-29
O RING	RX006	SPRING GUIDE	71523-30
O RING	RX008	INTERNAL CAGE	21523-28
THROTTLE VALVE	21501-06	BEARING	B3212
VALVE SPRING	31211-05	CLAMP NUT	71523-33
O RING	R0802	DRIVE DOG	71523-34
REVERSE RETAINER	21501-10	RETAINING RING (3)	71523-35
VALVE SCREW	21501-12	CTYPE RETAINING RING	71523-36
HOUSING GASKET	21501-13	CAM SPINDLE	71523-37
HOSUING CAP	71501-14	STEEL BALL	71523-38
SPRING PIN(2)	P2522	CLUTCH CARRIER	71523-39
O RING	R0902	BALL (4)	71523-40
HOUSING CAP STOP WASHER	21501-18	WASHER	71523-41
DEFLECTOR	21501-16	SPRING	71523-421
O RING	R1202	SPRING	71523-422
INLET BUSHING	21501-20	SPRING	71523-423
THROTTLE LEVER	21501-21	WASHER	71523-43
SPRING PIN	P0322	ADJUST NUT	71523-44
HOUSING HOOK	71501-15	SPACER	71523-45
MOTOR GASKET	21502-23	WASHER	71523-48
BEARING	BB1906	SPRING	71523-49
MOTOR GASKET	21502-25	WASHER	71523-50
CYLINDER	21502-27	CLUTCH HOUSING	71523-47
MOTOR PIN	21502-26	17mm SPANNER WRENCH	WO017
ROTOR	21522-21	1/4"HEX. WRENCH	71504-32
ROTOR BLADE (5)	31212-17	1/4"#2 BIT(2)	71523-53
FRONT END PLATE	21502-30		