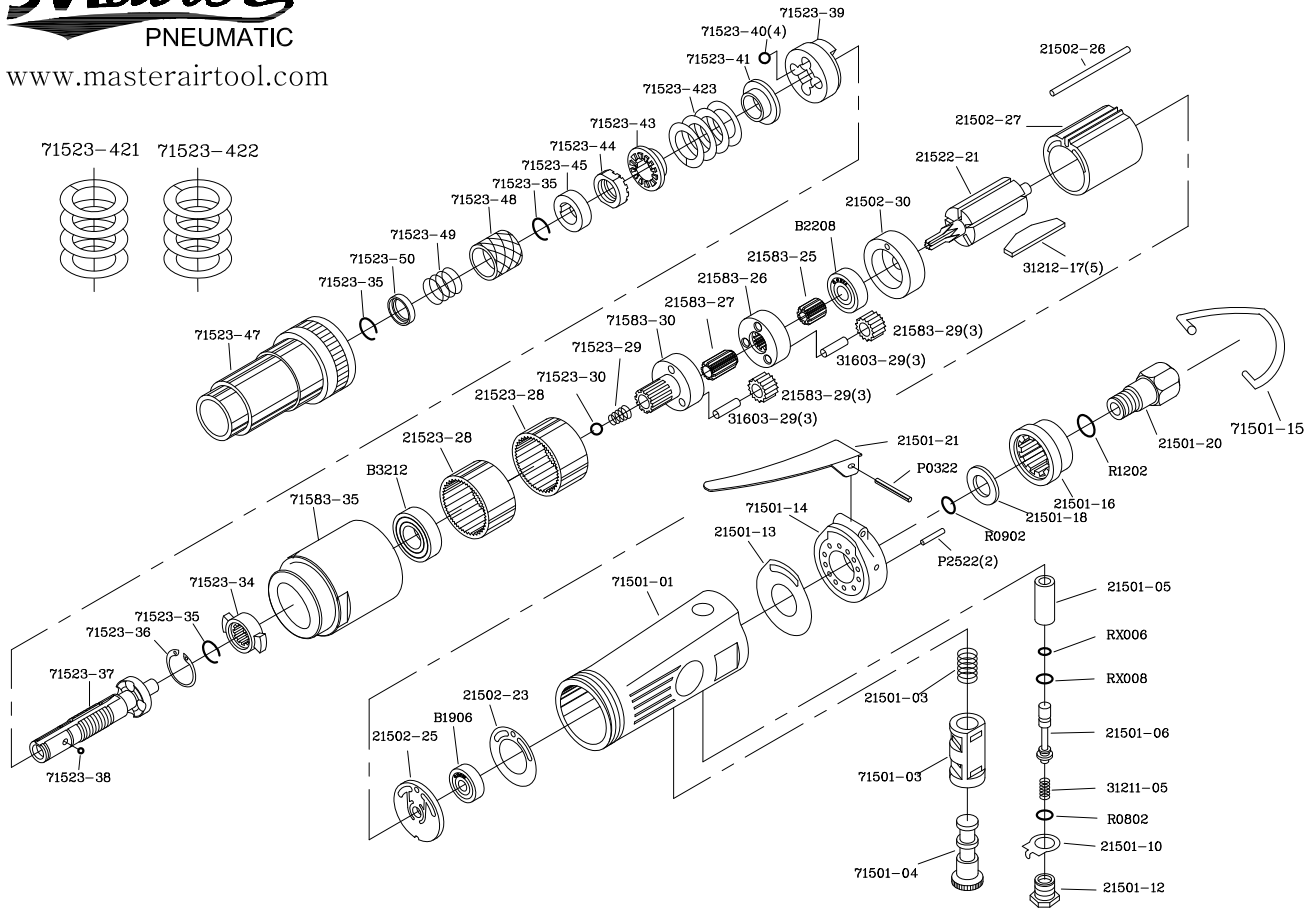


**MPT-71510 1/4"(750R.P.M) Adjustable Clutch Screwdriver**



DESCRIPTION	PARTS NO.	DESCRIPTION	PARTS NO.
MOTOR HOUSING	71501-01	CONNECT GEAR	21583-25
REVERSE SPRING	21501-03	CONNECT GEAR PLANET	21583-26
REVERSE BUSHING	71501-03	TRANSMISSION GEAR	21583-27
REVERSE VALVE	71501-04	PLANET GEAR(6)	21583-29
VALVE BUSHING	21501-05	PLANET PIN(6)	31603-29
O RING	RX006	PLANET CAGE	71583-30
O RING	RX008	SPRING	71523-29
THROTTLE VALVE	21501-06	SPRING GUIDE	71523-30
VALVE SPRING	31211-05	INTERNAL GEAR(2)	21523-28
O RING	R0802	BEARING	B3212
REVERSE RETAINER	21501-10	CLAMP NUT	71523-33
VALVE SCREW	21501-12	DRIVE DOG	71523-34
HOUSING GASKET	21501-13	RETAINING RING (3)	71523-35
HOSUING CAP	71501-14	CTYPE RETAINING RING	71523-36
SPRING PIN(2)	P2522	CAM SPINDLE	71523-37
O RING	R0902	STEEL BALL	71523-38
HOUSING CAP STOP WASHER	21501-18	CLUTCH CARRIER	71523-39
DEFLECTOR	21501-16	BALL (4)	71523-40
O RING	R1202	WASHER	71523-41
INLET BUSHING	21501-20	SPRING	71523-421
THROTTLE LEVER	21501-21	SPRING	71523-422
SPRING PIN	P0322	SPRING	71523-423
HOUSING HOOK	71501-15	WASHER	71523-43
MOTOR GASKET	21502-23	ADJUST NUT	71523-44
BEARING	B1906	SPACER	71523-45
MOTOR GASKET	21502-25	WASHER	71523-48
CYLINDER	21502-27	SPRING	71523-49
MOTOR PIN	21502-26	WASHER	71523-50
ROTOR	21522-21	CLUTCH HOUSING	71523-47
ROTOR BLADE (5)	31212-17	17mm SPANNER WRENCH	WO017
FRONT END PLATE	21502-30	1/4"HEX. WRENCH	71504-32
BEARING	B2208	1/4"#2 BIT(2)	71523-53