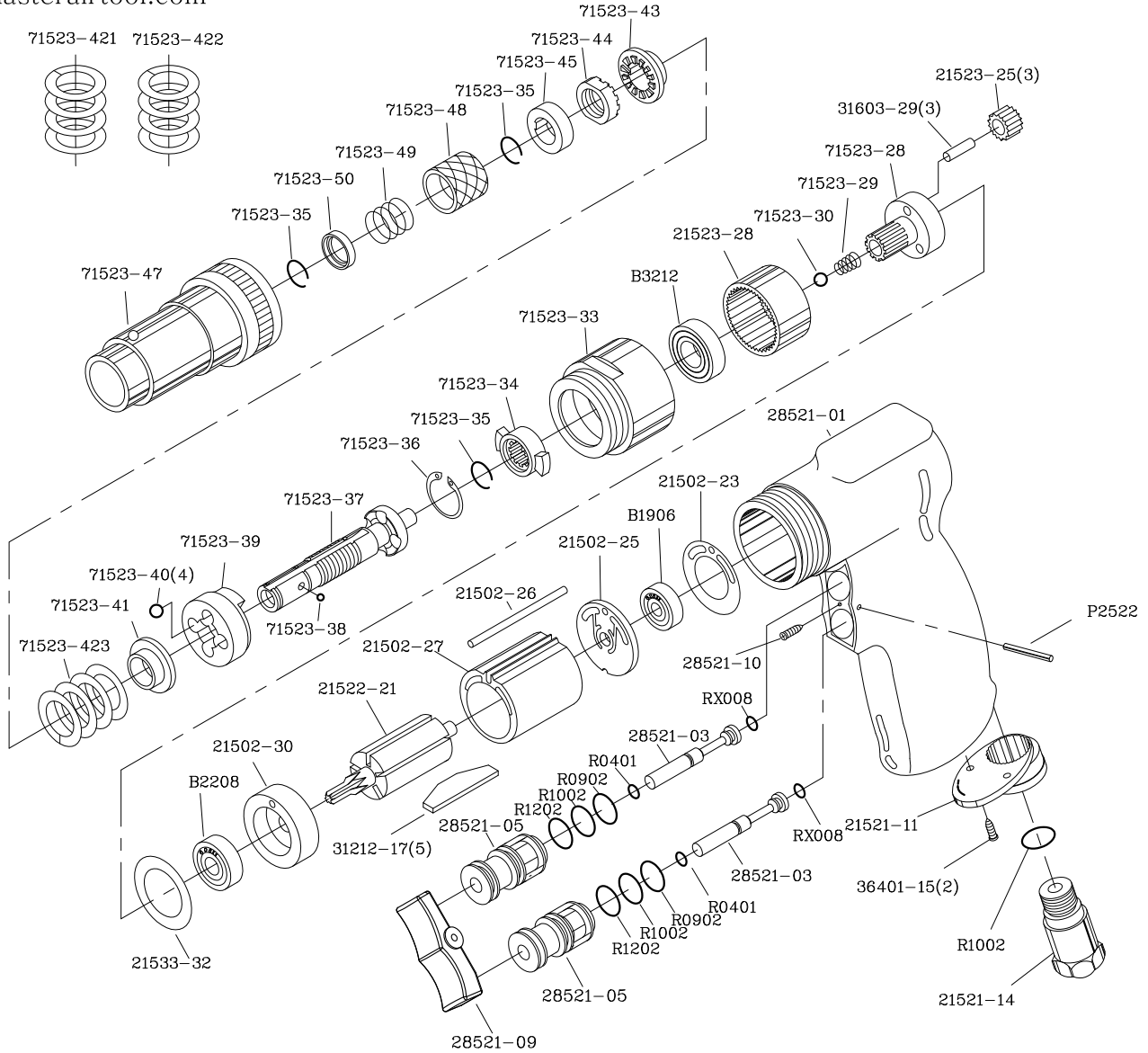


MPT-78520 1/4"(1800RPM)Adjustable Clutch Pistol Screwdriver



DESCRIPTION	PARTS NO.	DESCRIPTION	PARTS NO.	DESCRIPTION	PARTS NO.
MOTOR HOUSING	28521-01	MOTOR PIN	21502-26	C TYPE RETAINING RING	71523-36
O RING (2)	RX008	CYNLIDER	21502-27	CAM SPINDLE	71523-37
THROTTLE VALVE (2)	28521-03	ROTOR	21522-21	STEEL BALL (17)	71523-38
O RING (2)	R0401	ROTOR BLADE (5)	31212-17	CLUTCH CARRER	71523-39
O RING (2)	R0902	FRONT END PLATE	21502-30	WASHER	71523-41
O RING (2)	R1002	BEARING	B2208	SPRING (YELLOW)	71523-421
REVERSE BUSHING (2)	28521-05	MOTOR WASHER	21533-32	SPRING (BLACK)	71523-422
O RING (2)	R1202	PLANET GEAR (3)	21523-25	SPRING (GREEN)	71523-423
TRIGGER	28521-09	PLANET GEAR SPINDLE (3)	31603-29	ADJUST WASHER	71523-43
TRIGGER SCREW	28521-10	PLANET GEAR SEAT	71523-28	ADJUST NUT	71523-44
EXHAUST SLEEVE	21521-11	SPINDLE SPRING	71523-29	SPACE	71523-45
CIRCLE OF SCREW (2)	36401-15	INTERNAL GEAR	21523-28	SPRING WASHER	71523-48
O RING	R1002	CLUTCH BALL (4)	71523-40	SPRING	71523-49
INLET BUSHING	21521-14	BEARING	B3212	BIT WASHER	71523-50
SPRING PIN	P2522	CLAMP NUT	71523-33	CLUTCH HOUSING	71523-47
MOTOR GASKET	21502-23	DRIVE DOG	71523-34	1/4"HEX. WRENCH	71504-32
BEARING	B1906	SPINDLE BALL	71523-30	1/4" #2 BIT (2)	71523-53
REAR END PLATE	21502-25	RETAINING RING (3)	71523-35	17mm SPANNER WRENCH	WO017